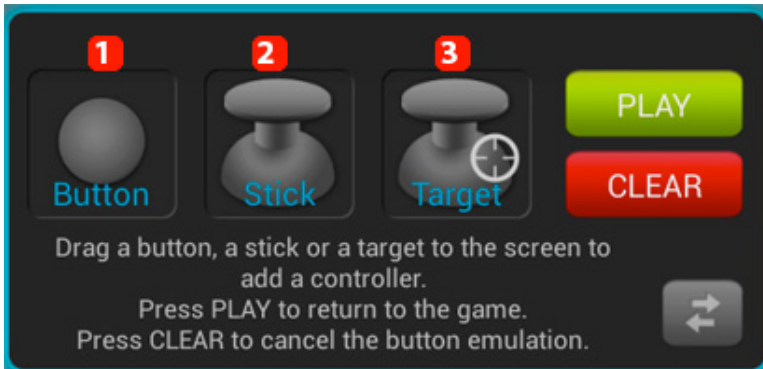


Specific by device

[Tv Connect] How can I pair the buttons using the mapping tool?

After you launched the game, hold the **Alt** button and press simultaneously the Cursor button of your remote control. A new window is displayed to allow you to pair buttons:



1. **Virtual button(e.g.: jump or shoot)**
2. **Virtual joystick for moving**
3. **Virtual target button for shooting games**

Hold the desired controller and drag it to the onscreen (virtual) button that you pair it with. Select the button or joystick on your game controller that you want to associate.

Joysticks and Targets offer more options that you can modify anytime.

If you used the wrong controller or you want to remove a pairing, launch the mapping tool and hold the controller to be modified. A Window is displayed:



Select the Tool icon to modify the controller and select the X icon to delete it.
Unique solution ID: #1685

Specific by device

Author: Admin FAQ

Last update: 2014-11-18 10:10